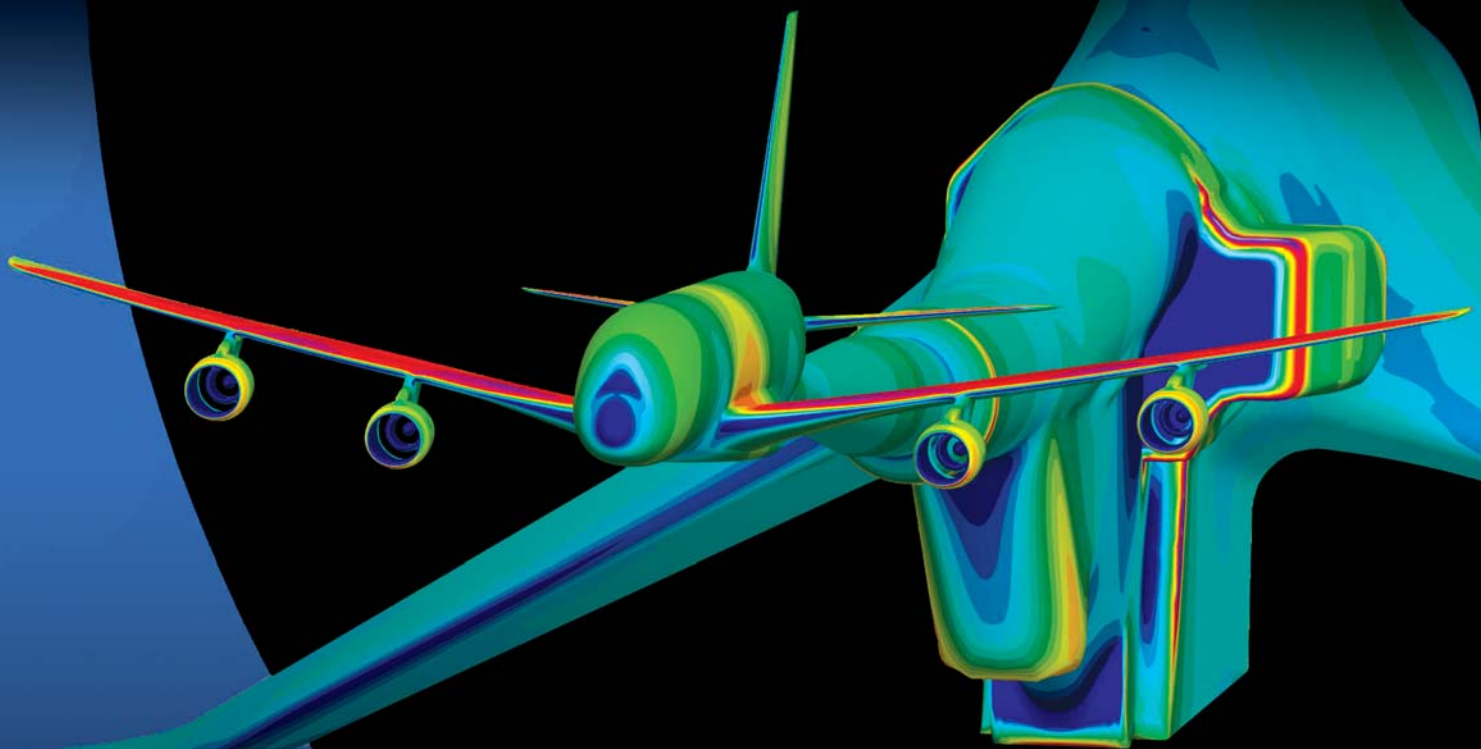


PROGRAMME



47th International Symposium of Applied Aerodynamics

Wind tunnel and computation:
a joint strategy for flow prediction
Paris, March 26-27-28, 2012

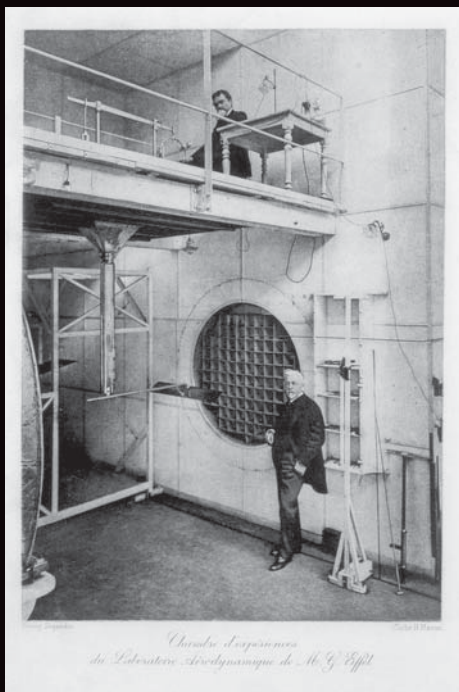


www.3af-aerodynamics2012.com



1912-2012 Centenary of the Eiffel wind tunnel





Wind tunnel and computation: a joint strategy for flow prediction

In 1909, Gustave Eiffel built at the foot of his famous tower one of the first wind tunnels dedicated to a new science: Aerodynamics. In 1912, the wind tunnel was moved to Auteuil, in Paris, where it is still in operation.

In 2012, the French aerodynamics community celebrates the centenary of the Eiffel wind tunnel and its continued use for the study of a large number of aerodynamic problems concerning aircraft, automobiles, buildings, etc. The 47th International Symposium of Applied Aerodynamics, which is placed under the auspices of this celebration, will focus on today strategy used for performance predictions and detailed flow analysis. This includes intensive use of CFD in connection with wind-tunnel experiments aiming to assessing the accuracy of computations, investigating the physics of complex flows and improving theoretical models. The symposium will also consider the close connection between wind-tunnel operation and CFD within the context of a computer aided wind tunnel.

SITE OF THE CONFERENCE:

Arts et Métiers ParisTech
151, Boulevard de l'Hôpital
75013 Paris – France

ORGANIZATION:



Scientific Committee

Holger BABINSKY	University of Cambridge	Nicolas GÉTIN	MBDA
Abderrahmane BAÏRI	University Paris West	Patrick GILLIÉRON	Renault
Emmanuel BÉNARD	ISAE	Patrick GNEMMI	ISL
Jean-Paul BONNET	University of Poitiers	Vincent HERBERT	PSA – Peugeot Citroën
Pierre BRENNER	Astrium	Denis JEANDEL	Ecole Centrale of Lyon
Stéphane BURGUBURU	Onera	Emilie JÉRÔME	DGA
Yannick BURY	ISAE	Azeddine KOURTA	University of Orléans
Laurent CAMBIER	Onera	Viviana LAGO	CNRS
Patrick CHAMPIGNY	Onera	Amable LIÑÁN MARTINEZ	Polytechnic University of Madrid
Bruno CHANETZ	Onera	Bernard MASURE	Polytech'Orléans
Paola CINNELLA	Arts et Métiers ParisTech	Olivier ORLANDI	SAFRAN-SME
Jean COLLINET	Astrium	Didier PAGAN	MBDA
Michel COSTES	Onera	Sandrine PALERM	CNES
Jean COUSTEIX	ISAE	Pierre-Yves PAMART	CSTB
Denis DARRACQ	Airbus	Jean-Denis PARISSE	University of Marseille
Jean DÉLERY	3AF/Onera	Jean-Pierre ROSENBLUM	Dassault Aviation
Piotr DOERFFER	Polish Academy of Sciences	Jean TENSI	ENSMA
Michel DUMAS	SAFRAN-Snecma	Jean-Pierre VEUILLOT	Onera
Gérard FOURNIER	GFIC	Zoubir ZOUAOU	Glyndwr University
Anne GAZAIX	Airbus		

8h45 SYMPOSIUM WELCOME
Michel Scheller (President, French Aeronautics and Astronautics Society)
Alex Rémy (Director, Arts et Métiers ParisTech)

9h15 KEYNOTE CONFERENCE N°1:
Wind tunnels: key enablers for industrial innovation in aircraft design
Patrick Wagner (Onera)

Session n° 1a: Wind tunnel operation, improvement and development
Chairperson: Alain Merlen (Onera and University of Lille 1)

Session n° 1b: Computations and validation I: Wind turbines/propellers
Chairperson: Sandrine Aubrun-Sanches (PRISME Laboratory - Orléans)

10h00 **Development of a wind tunnel model passive vibration damping system**
Bergeron G., Dewar M., Fuchiron B., Mayaud U. and Weiss J. (Bombardier/Ecole de Technologie Supérieure, Montréal)

Wind tunnel experiments and numerical study of a wind turbine
Dobrev I. and Massouh F. (Arts et Métiers – ParisTech)

10h30 **Standard models in the experimental aerodynamics laboratory of VTI**
Damljanović D., Vuković D. and Oćokoljić G. (Military Technical Institute, Belgrade)

Wind turbine wake computations
Daaou Nedjaria H., Guerria O. and Saighib M. (Renewable energies Development Center/ Université des Sciences et de la Technologie Houari Boumédiène, Algiers)

11h00 **Coffee break**

11h30 **Tandem nozzle supersonic wind tunnel design**
Wu J. and Radespiel R. (TU Braunschweig)

Evaluation of RANS modeling of wind turbine wake flow using wind tunnel measurements
Sumner J., Espana G., Aubrun S. and Masson C. (ETS Montréal / PRISME Laboratory - Orléans)

12h00 **Experiments and numerical investigations of pitch-plunging wing aerodynamics at low Reynolds numbers**
Wokoeck R. and Radespiel R. (TU Braunschweig)

Fluid-structure interaction and anisotropic mesh adaptation
Hachem E., Feghali S. and Coupez T. (CEMEF - MINES ParisTech)

12h30 **Interactive computation and visualization. Towards a virtual wind tunnel**
Labroquère J., Duvigneau R., Kloczko T. and Wintz J. (INRIA Sophia Antipolis Méditerranée)

Wake analysis of UAV propeller at incidence
Gomez Ariza D., Moretti S., Bénard E. and Moschetta J.-M. (BERTIN Technologies/ISAE)

13h00 **Lunch**

14h15 KEYNOTE CONFERENCE N°2:
Validation of the state of the art of computational aerodynamics through community workshops
Dimitri Mavriplis (University of Wyoming)

Session n° 2a: Computer aided wind tunnel
Chairperson: Holger Babinsky (University of Cambridge)

Session n° 2b: Computations and validation II: Data base/Propulsion
Chairperson: Michel Dumas (SAFRAN-Snecma)

15h00 **Using CFD to calculate support interference effect in wind tunnel tests.**
Cartieri A., Viscat P. and Mouton S. (Onera)

Creating a database for validation of predictive methods for rotorcraft
Pahov V., Valiev M., Jerehov V., Makarova L., Kusyymov A. and Barakos G. (Kazan National Technical University/University of Liverpool)

15h30 **Simulation and model support correction for slotted wall transonic wind tunnels**
Heidebrecht A. (DLR)

Garteur AG/AD-45 – Applications of CFD to predict high g loads
Hantrais-Gervois J.-L., Ceresola N., Heinrich R., van Muijden J., Sawyers D., Totland E. and Tysel L. (Onera/Alenia Aeronautica/ DLR/NLR /Airbus /SAAB/FOI)

16h00	Prediction of the aerodynamic effect of model deformation during transonic wind tunnel tests <i>Mouton S., Lyonnet M. and Le Sant Y. (Onera)</i>	Zonal Detached Eddy Simulation applied to the tip clearance flow in an axial compressor <i>Rièra W., Castillon L., Deck S., Riou J, Ottavy X. and Leboeuf F. (Onera/SAFRAN-Snecma/Ecole Centrale of Lyon)</i>
16h30	Coffee break	
17h00	RANS simulations to compute wind tunnel wall corrections <i>Hantrais-Gervois J.-L., Mouton S. and Piat J.-F. (Onera)</i>	Garteur AD/AG-48 – Computation validation on lateral jet interactions at supersonic speeds <i>Gnemmi P., Gruhn P., Leplat M., Nottin C. and Wallin S. (ISL/DLR/Onera/MBDA/FOI)</i>
17h30	Modeling the S2A wind tunnel using Computational Fluid Dynamics <i>Vigneron R., Bourdassol C., Belanger A. and Kelley B. (GIE S2A)</i>	Reverse thrust tests: An experimental approach based on numerics <i>Dejeu C., Vernet M. and Talbotec J. (SAFRAN-Snecma)</i>
18h00	HPC capabilities of the elsA CFD software applied to a counter rotating open rotor test rig <i>Boisard R., Delattre G. and Falissard F. (Onera)</i>	Modelling and numerical simulation of flow in ground run-up enclosures <i>Lazaro B. J., González E. and Liñan A. (Universidad Politécnica de Madrid)</i>
18h30	End of sessions	
19h30	Ceremony for the Centenary of the Eiffel wind tunnel at DGAC	

9h00 KEYNOTE CONFERENCE N°3: Applications of data assimilation in aerodynamics
Richard Dwight (Delft University of Technology)

Session n° 3a: Advanced measurement techniques, processing and calibration methods
Chairperson: Markus Raffel (DLR)

Session n° 3b: Computation and validation III: Transition and instabilities
Chairperson: Daniel Arnal (Onera)

- 9h45 **4D-variational data assimilation using POD reduced-order model**
Tissot G., Cordier L. and Noack B. R. (PPRIME Institute - Poitiers)
- 10h15 **Pressure-sensitive paint techniques in hypersonic flows**
Yang L., Quinn M., Zare-Behtash H. and Kontis K. (University of Manchester)

- Transition control by micron-sized roughness elements: Non-linear stability analyses and wind tunnel experiments**
Vermeersch O. and Arnal D. (Onera)
- Investigation of the laminar separation-induced transition with the γ - Re_{θ} transition model on High-Lift Low-Pressure Turbine (HLLPT) rotor blades at steady conditions**
Babajee J. and Arts T. (VKI)

10h45 Coffee break

- 11h15 **Dynamic mode decomposition of PIV measurements for the cylinder wake flow in turbulent regime**
Tissot G., Cordier L. and Noack B.R. (PPRIME Institute - Poitiers)
- 11h45 **Experimental investigation of the behaviour of incompressible turbulent attachment lines and in its proximity**
Gowree E.R. and Atkin C.J. (City University London)
- 12h15 **Interference of the flapped wings in low-speed open circuit wind-tunnels**
Zherekhov V.V., Ledyankina O.A. and Sungatullin A.R (Tupolev's Kazan National Technical Research University)

- Comparison of experimental and computational boundary-layer profiles and instability growth on a flared cone in a Mach 6 quiet flow**
Hofferth J.W., Reed H.L. and Saric W.S. (Texas A&M University)
- Computational and experimental results in the open test section of the aeroacoustic wind tunnel Braunschweig**
Ciobaca V., Pott-Pollenske M., Melber-Wilkending S. and Wichmann G. (DLR)
- Joint wind tunnel and CFD examination of flow over shock control bumps**
Nübler K., Colliss S., Lutz T., Krämer E. and Babinsky H. (University of Stuttgart/ University of Cambridge)

12h45 Lunch

14h15 KEYNOTE CONFERENCE N°4:
CFD and wind tunnel testing 'hand in hand' at Dassault Aviation
Zdenek Johan (Dassault Aviation)

Session n° 4a: Cooperative CFD and wind tunnel for aerodynamics design
Chairperson: Nicolas Daniel (Airbus Germany)

Session n° 4b: Experiment and validation for miscellaneous applications I
Chairperson: Vincent Herbert (PSA Peugeot Citroën)

15h00 **Transition prediction on a supersonic natural laminar flow wing: Experiments and computations**
Vermeersch O., Yoshida K., Ueda Y. and Arnal D. (Onera/JAXA)

Hot wire and pressure-velocity analysis of a model A-pillar vortex with and without upstream turbulence. Comparison with DES computation
Affejee F., Sicot C., Perrin R. and Borée J. (PPRIME Institute/ENSMA)

15h30 **Combined wind tunnel tests and flow simulations for light aircrafts performance prediction**
Mouton S. and Rantet E. (Onera/Aviation Design)

Three-dimensional organisation in an incompressible cavity flow
Pastur L. R., Faigneau Y., Lusseyran F., Faure T.M., Basley J. and Douay C. (University Paris-South/LIMSI-CNRS/University Pierre et Marie Curie/Ecole de l'Air)

16h00 **Development status of a prototype system for EFD/CFD integration**
Watanabe S., Kuchi-ishi S., Murakami K., Hashimoto A., Kato H., Yamashita T., Yasue K., Imagawa K. and Nakakita K. (Japan Aerospace Exploration Agency – JAXA)

Numerical simulations and wind tunnel measurements on a tricycle wheel sub-system
Driant T., Remaki L., Moreau S., Fellouah H. and Desrochers A. (University of Sherbrooke)

16h30 **Coffee break**

17h00 **A combined numerical and experimental approach for the prediction of control surface efficiency**
Girodroux-Lavigne P., Lepage A. and David J.-M. (Onera)

Experimental and numerical simulation of an Iranian wind mill
Hocine A., Chanetz B., Guenoun S., Baïri A., Tomassetti A., Brocato M. and Gohari K. (LTIE - University Paris West/ENSAPM)

17h30 **CFD / WTT synergy towards an enhanced A/C performance prediction at Airbus**
Estève N. and Estève M.-J. (Airbus Operations SAS)

Modeling and simulation of air flow around solid structures using COMSOL multiphysics. Model verification in case of buildings.
Eissa S. H. and Eissa A. S. (National Research Center/Cairo University, Cairo)

18h00 **Development of new heat exchanger design. Part I: Experimental and numerical investigations of heat transfer from smooth and grooved cylinder**
Couzinet A., Pierrat D., Gros L., Moctar A. and Foata A. (CETIM/University of Nantes/DGA)

Experimental and numerical analysis of apex vortex location on delta wing-fuselage combinations
Boumrar I. and Ouibrahim A. (University Mouloud Mammeri, Tizi-Ouzou)

18h30 **Awards and banquet**



9h00 KEYNOTE CONFERENCE N°5:

Cathedrals for the wind, a movie from *Jean Tensi (ENSMA)*, followed by:
Gustave Eiffel and the wind: A pioneer in experimental aerodynamics
Martin Peter (Eiffel Wind Tunnel)

Session n° 5a: Fundamental experiments and CFD for flow control

Chairperson: Azeddine Kourta (PRISME Laboratory – Orléans)

Session n° 5b: Experiment and validation for miscellaneous applications II

Chairperson: Eric Ribadeau-Dumas (MBDA)

9h45 **Mach 2 supersonic rarefied airflow around a cylinder and its interaction with a DC discharge.**
Parisse J.-D., Pons J. and Lago V. (JUSTI - University of Provence/Institute ICARE – Orléans)

LES of shock induced nozzle flow separation
Chaudhuri A., Hadjadj A. and Palerm S. (CORIA - Rouen/CNES)

10h15 **On experimental sensitivity analysis of an axisymmetric turbulent wake**
Grandemange M., Gohlke M. and Cadot O. (ENSTA – ParisTech/PSA Peugeot Citroën)

Experimental and numerical analysis of the dual bell nozzle concept for nano-launcher applications
Palerm S., Robinet J.-C., Bar V., Reijasse P. and Bermond Y. (CNES/Arts et Métiers ParisTech/Onera)

10h45 **Coffee break**

11h15 **Self-adaptive control of a bluff body wake by means of porous flaps**
Feuvrier A., Mazellier N. and Kourta A. (PRISME Laboratory – Orléans)

Subsonic roll-damping data obtained in the T-38 wind tunnel for two missile models
Samardžić M., Anastasijević Z., Marinkovski D. and Isaković J. (Military Technical Institute, Belgrade)

11h45 **Experimental validation of vortex generators modeled by source terms for drag reduction of ground vehicles**
Rouillon T., Harambat F., Mathelin L. and Tenaud C. (PSA Peugeot Citroën/LIMSI)

Testing of antitank missile with lateral jets
Ocokoljić G., Samardžić M. and Vitić A. (Military Technical Institute, Belgrade)

12h15 **Drag reduction on the 25° slant angle Ahmed reference body using pulsed jets**
Joseph P., Amandolese X. and Aider J.-L. (IAT/CNAM/ESCPI)

On the aerodynamics of battle damaged wings
Djellal S. and Azzam T. (Laboratoire de Mécanique des Fluides, Algiers)

12h45 **Lunch**

14h45
17h00

TECHNICAL VISIT
The Eiffel Wind Tunnel at Auteuil (Paris)

CONFERENCE LOCATION

Arts et Métiers ParisTech
151, Boulevard de l'Hôpital
75013 Paris - France

LANGUAGE

Official language for the conference is English.

SECRETARIAT

For complementary information contact:
 Anne VENABLES, Executive Secretary
 3AF, 6 rue Galilée – 75016 Paris, France
 Phone: +33 (0)1 56 64 12 30
 Fax: +33 (0)1 56 64 12 31
 E-mail: secrexec@aaaf.asso.fr

CANCELLATION

Replacement of participants remains always possible. Cancellation will only be accepted until 7 days prior to the conference and must be received in written form.
 After 7 days, there will be a € 350 cancellation fee. Registrants who do not cancel before the conference date will be liable for the full registration fees.

REGISTRATION

Registration fees are free of taxes.

They are fixed as follow:

Participants:	€ 900
3AF Members:	€ 650
Speakers and Chairpersons:	€ 650
Students/university speakers:	€ 400

All participants including Chairmen and Speakers have to register and pay the registration fee. To register, please forward to the 3AF the registration form duly completed, together with the cheque in Euros, or an order from your firm. Bank transfer and payment made by credit card are also accepted (see Registration form). Registration fees include coffee breaks and lunches of 26, 27, 28 March, 2012, and evening banquet of 27 March, 2012.

The symposium takes place in the **Arts et Métiers ParisTech** (France), a prestigious engineering school situated in Paris.

How to reach the symposium location?

Arts et Métiers ParisTech

151, Boulevard de l'Hôpital
75013 Paris - France

By car

P1: Parking Segetax - 25 Rue du Banquier, 75013 Paris
P2: Park Alizés - 114 Boulevard de l'Hôpital, 75013 Paris
P3: Vinci Park Services - 181 Boulevard Vincent Auriol, 75013 Paris

By bus

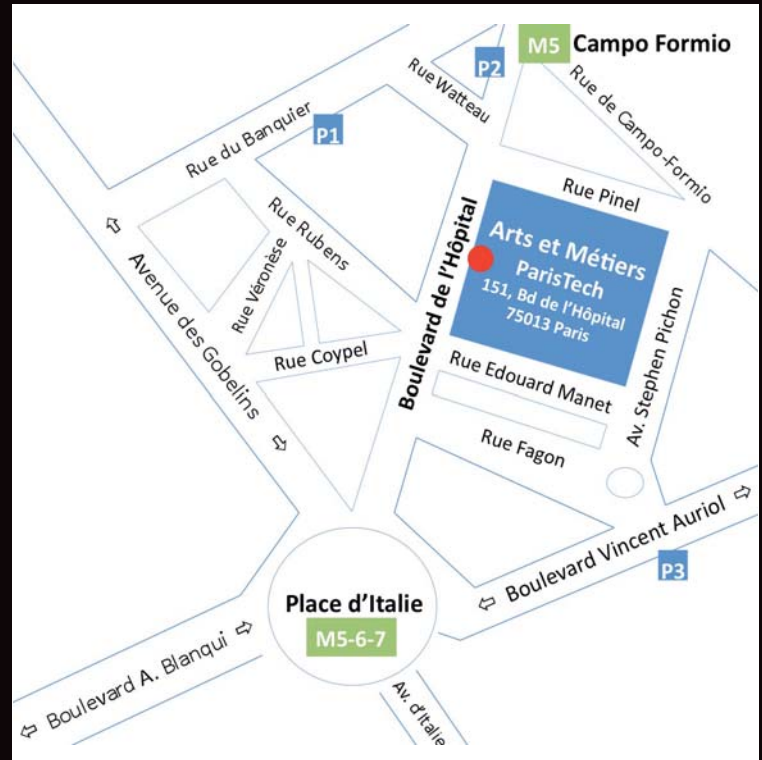
Lines N° 27-47-57-64-67-83

Underground Stations

M5: Campo Formio/Place d'Italie
M6: Place d'Italie
M7: Place d'Italie

RER Station

RER C: Paris Austerlitz/Bibliothèque François Mitterrand



For more details concerning the various transport lines, consult the RATP map (1). You can also request a copy when you purchase your transport tickets. For more information concerning public transport in the Paris region, please consult the RATP website (1). RATP has 3 dedicated bus lines for travel to and from the major airports around Paris: Orly and Roissy Charles de Gaulle. See their website for more information about these bus lines (1), as well as alternative itineraries by public transport for travelling to and from the airports.

Air France coaches are at your service with 5 regular bus lines taking you to and from the airports. Please see their website for more information (2).

Vélib' is a self-service "bike hire" system available 24 hours a day, 7 days a week. There are multiple pick-up and drop-off locations which allow you to pick up your bike from one service point and drop off to another. Consult the Vélib website (3) for more information and a list of Vélib stations.

- 1 - <http://www.ratp.fr>
- 2 - <http://videocdn.airfrance.com/cars-airfrance>
- 3 - <http://www.velib.paris.fr>

Make your reservation as soon as possible. Some places are recommended near the school, in the 13th "arrondissement" of Paris. For booking hotel on line, the Official website of the Paris Convention and Visitors Bureau: www.parisinfo.com

JACK'S HÔTEL **

Paris - Rive Gauche

19, avenue Stephen Pichon - 75013 Paris
Phone: +33 (0)1 45 85 17 34
info@jacks-hotel.com
Metro : Place d'Italie (M5, 6, 7), Nationale (M6), Campo Formio (M5)
Autobus : 27-47-57-64-67-83
www.jacks-hotel.com

HÔTEL MANET **

Special Rate for 3AF

15, rue Edouard Manet - 75013 Paris
Phone : +33 (0)1 45 86 35 99
hotel.manet@wanadoo.fr
Metro : Place d'Italie (M5, 6, 7)
Autobus : 27-47-57-64-67-83
www.hotelmanet.com

TIMHÔTEL **

22, rue Barrault - 75013 Paris
Phone : +33 (0)1 45 80 67 67
Metro : M6 Corvisart/Place d'Italie
Autobus : 57-62-67-21-83-47
www.timhotel.com

HÔTEL IBIS **

Paris Place d'Italie

25, avenue Stephen Pichon - 75013 Paris
Phone : +33 (0)1 44 24 94 85
h1803@accor.com
Metro : Place d'Italie (M5, 6, 7), Nationale (M6), Campo Formio (M5)
Autobus : 27-47-57-64-67-83
www.ibishotel.com

HÔTEL DES ARTS **

8, rue Coppel - 75013 Paris
Phone : +33 (0)1 47 07 76 32
arts@escapade-paris.com
Metro : Place d'Italie (M5, 6, 7)
Autobus : 27-47-57-64-67-83
www.hotel-des-arts-paris.fr

HÔTEL COYPEL **

2, rue Coppel - 75013 Paris
Phone: +33 (0)1 43 31 18 08
coypel@wanadoo.fr
Metro : Place d'Italie (M5, 6, 7)
Autobus : 27-47-57-64-67-83
www.hotelcoypel.com

CITADINES

Place d'Italie Paris

18, place d'Italie - 75013 Paris
Phone : +33 (0)1 43 13 85 00
italie@citadines.com
Metro : Place d'Italie (M5, 6, 7)
Autobus : 27-47-57-64-67-83
www.citadines.com

NOVOTEL

Paris Porte d'Italie

22, rue Voltaire
94270 Le Kremlin-Bicêtre
Phone : +33 (0)1 45 21 19 09
H5586@accor.com
Metro : Porte d'Italie (M7)
Autobus : 125, 131, 183, 184, 185, 186
Tramway : Porte d'Italie (T3)
www.novotel.com